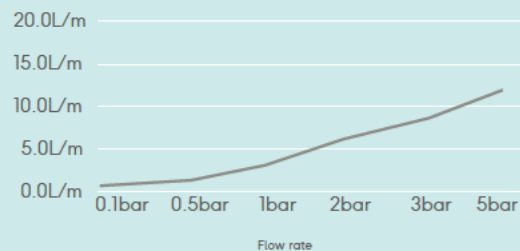


## WATER FLOWRATE

— 1 way diverter



## AFTERCARE INSTRUCTIONS

These products have a high quality, durable finish which in order to preserve, should be treated with care.

Clean with warm soapy water and a soft damp cloth only.

Cleaning products, including non-scratch ones could damage the finish.

## CUSTOMER SERVICE

t: +44(0)208 686 5100  
e: [aftersales@saneux.com](mailto:aftersales@saneux.com)

Iain Stewart Centre, Beehive Ring Rd,  
Crawley, Gatwick RH6 0PB

[www.saneux.com](http://www.saneux.com)

## COS DOUCHE KIT

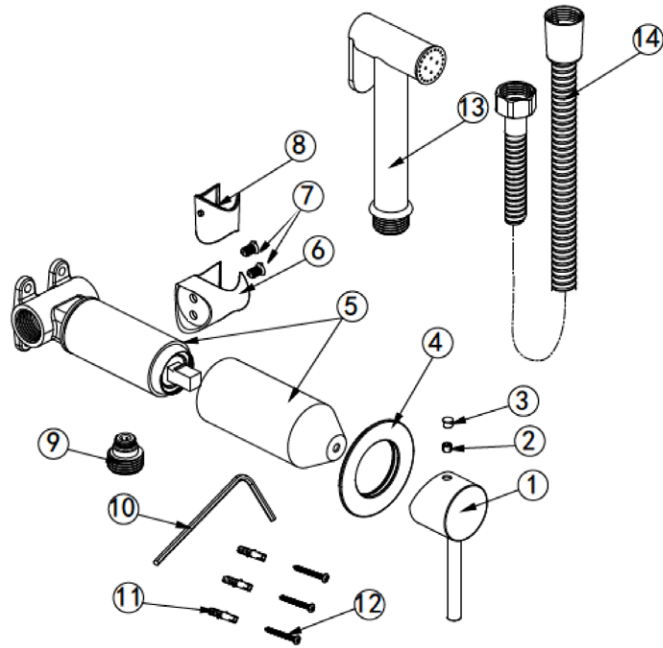
## INSTALLATION INSTRUCTIONS



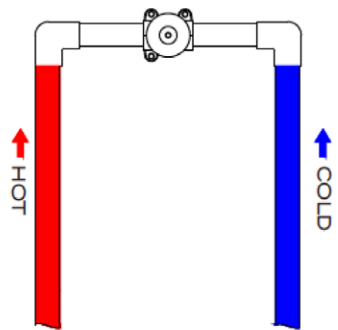
CODKO1

saneux

## EXPLODED COMPONENT ASSEMBLY

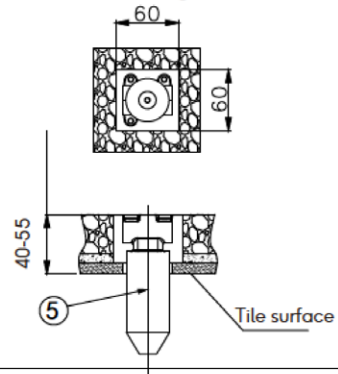


## PIPE CONNECTION



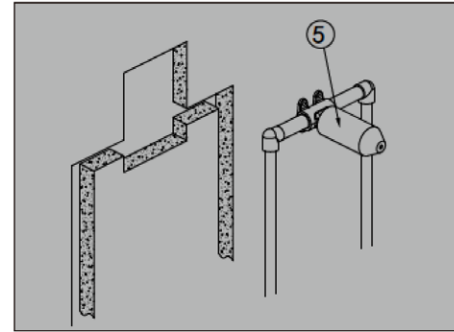
## WALL OPENING DIMENSIONS

The length, width and depth of the main entry holes are shown in the dimensional requirements of the drawings.



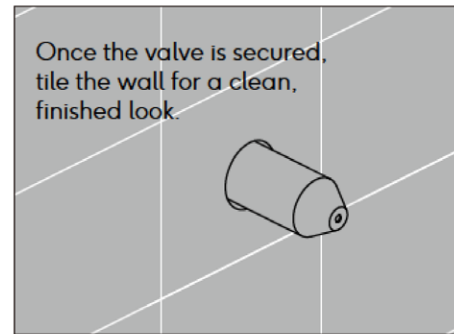
## 1. CHASE WALL FOR PIPEWORK

Chase out the wall to fit the hot and cold feeds and valve body, ensuring everything sits flush.

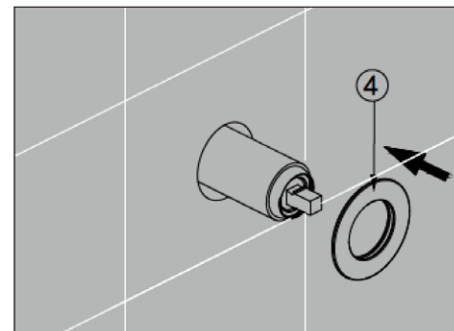


## 3. TILING OVER

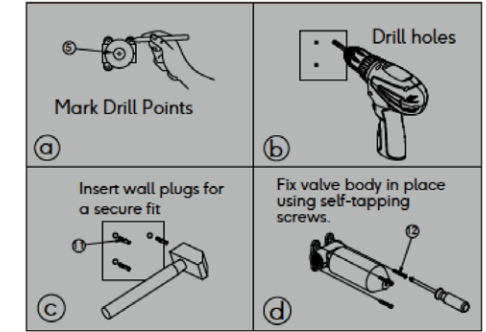
Once the valve is secured, tile the wall for a clean, finished look.



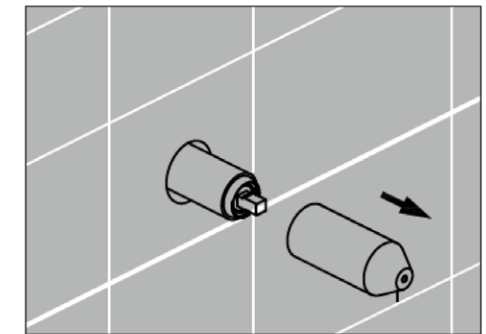
## 5. FIT DECORATIVE PLATE



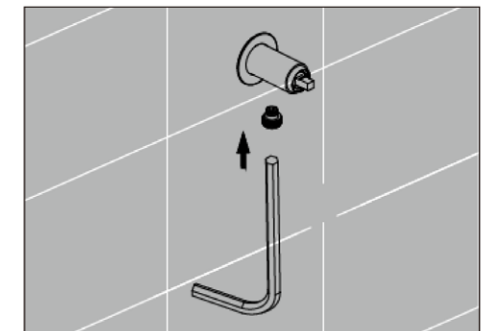
## 2. FIXING THE VALVE BODY



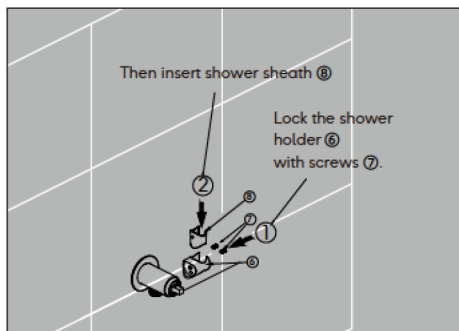
## 4. REMOVE PLASTIC PROTECTION SLEEVE



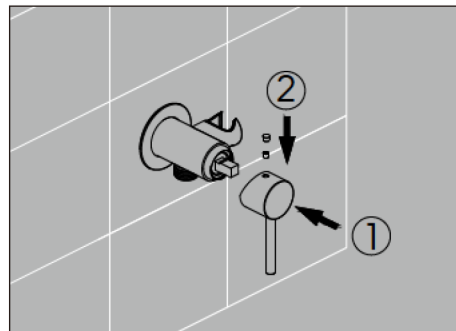
## 6. FIT HOSE COUPLINGS



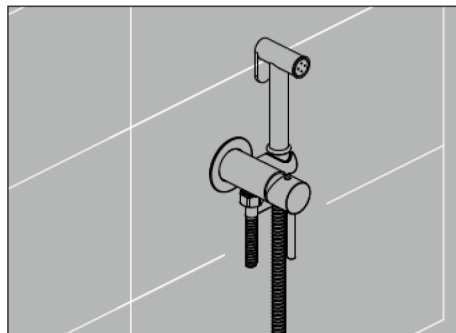
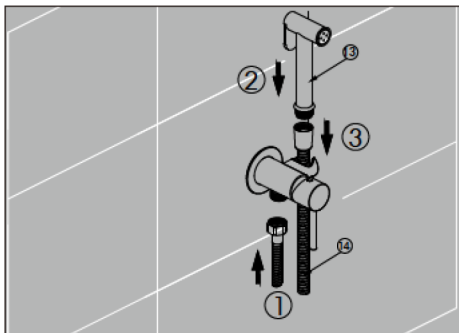
## 6. INSTALL SPRAY GUN HOLDER



## 7. INSTALL HANDLE



## 8. ATTACH HOSE TO SPRAY GUN AND VALVE OUTLET



### 1. INSTALLATION NOTICE

- 1.1. Please carefully check the accessory list provided below and contact our distributor if any items are missing or incorrect.
- 1.2. Do not attempt to disassemble the main body, as it has been correctly installed and tested at the factory before dispatch.
- 1.3. The hot water supply should be connected to the left, and the cold water supply to the right, when viewed from the operating position. Failure to follow this could cause permanent damage to the cartridge.
- 1.4. Before connecting the unit, ensure that the supply lines are flushed to remove any impurities.
- 1.5. The water pressure should be between 0.5 bar and 10 bar (including both hot and cold water pressures), and the suitable water temperature range is from 4°C to 90°C.
- 1.6. Accessories may be subject to change without prior notice, but this will not affect their performance.
- 1.7. Important Reminder: In colder climates or if the indoor temperature drops below 4°C in winter, and if the taps are not going to be used for an extended period, please turn off the inlet water valve and drain any remaining water from the supply pipe. This will help prevent faucet damage caused by the expansion of frozen water.

### 2. INSTALLATION INSTRUCTIONS

- 2.1. Please read the installation instructions carefully before proceeding with installation.
- 2.2. Installation must be carried out by qualified personnel.

### 3. INSTALLATION PROCEDURE

- 3.1. Turn on the water supply and check each connection for any leaks.
- 3.2. When operating the water faucet, the wider the angle, the greater the flow. Conversely, a smaller angle will result in a smaller flow.
- 3.4. When using the mixer, turning the knob to the left will provide hot water, and turning it to the right will provide cold water.

### 4. CLEANING AND MAINTENANCE

To maintain the product's appearance and shine, please follow these guidelines:

- 4.1. Rinse with water and dry only with a soft cloth.
- 4.2. For cleaning, use neutral liquid soap or a clear glass cleaner if necessary.
- 4.3. Do not use harsh cleaning agents or abrasive sponges.
- 4.4. Avoid using acidic or powdered cleaners.

### HOW TO OPERATE

